



# Safe and affordable fire-safety for high-rise and high-risk buildings

---

Introducing  
EVACSTAC™  
Escape Towers



## EVACSTAC is an innovative collaboration between the construction industry and fire-safety experts, to improve the safety of high-rise and high-risk buildings

EVACSTAC is an affordable, A versatile product: it can introduce a prefabricated, retrofitted escape tower, sprinkler system into every floor of the providing that vital 2nd staircase and existing building; and if required, a lift safe evacuation route for residents, with its own independent electrical leaseholders and building owners. In source can be incorporated into the addition, it provides safe access for design. It can be retrofitted to most emergencyresponders;andimmediate buildings, with minimal inconvenience access to pressurised water and to residents, and without the need for firefighting equipment at every level. rehousing.

**A prefabricated, retrofitted escape tower built to ensure the safe evacuation of all.**

---

## The Problem

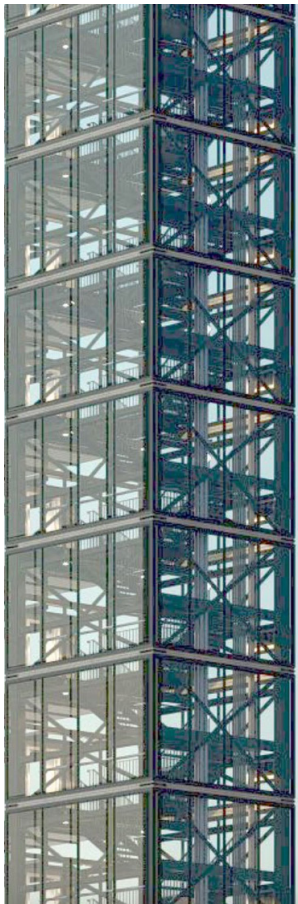
There are 12,000 high and 100,000 medium rise buildings across the UK, many with a single staircase

Industry and Fire Experts have come together to make 5 key recommendations to improve the safety of such buildings:

- Removal of combustible cladding (including combustible insulation).
- The greater use of sprinklers.
- Development of evacuation plans, including procedures for persons who are unable to use the stairs in an emergency, or who may require assistance.
- Requirement that all buildings need at least 2 staircases offering an alternate means of escape.
- Protection of fire exit routes.

**“High-rise residential buildings in the UK, such as Grenfell have only one staircase...This creates a serious problem during a fire, firefighters will have to use the same staircase to tackle the blaze as the residents that are escaping it.”**

*Paul Bussey (Fire Lead at AHMM Architects and member of RIBA)*



## EVACSTAC – is our innovative, prefabricated, retrofitted escape tower

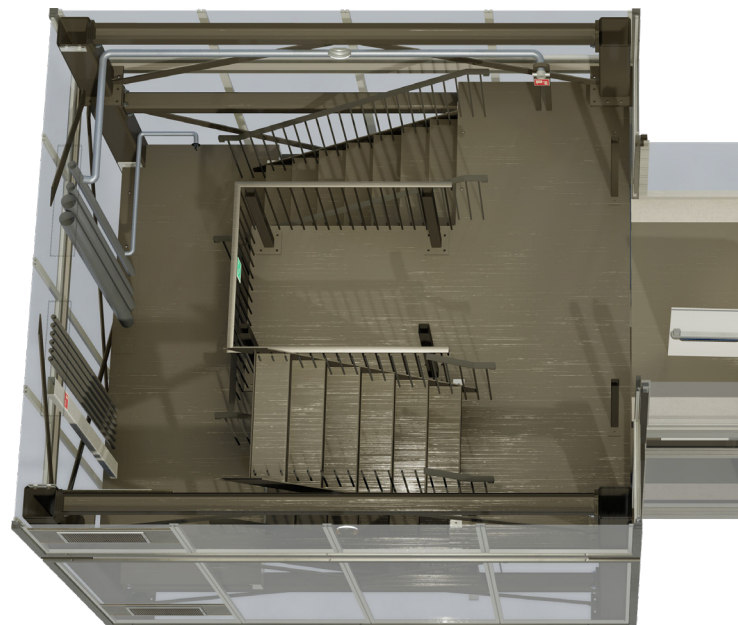
EVACSTAC allows the safe exterior in 9mm or 11mm Premium evacuation of all residents from A2 Fireproof cladding or fireproof high-rise or high-risk buildings glass options, to upgrade and with a single staircase. It provides complement the existing building. a 2nd staircase for single staircase The steel pods, including their buildings, provides an alternative smoke extracting access tunnels, evacuation route and protects fire are transported to site and fitted into exits. An EVACSTAC escape tower position up to 5 storeys at a time, is manufactured off site as made to with minimal disruption to residents. measure, stackable structural steel modules (pods), with a customisable

**EVACSTAC - “a highly innovative and flexible solution to these challenges in single staircase high rise buildings.”**

***Bernie Higgins** (Director of the FIA)*

### Key Features:

- Access to a dry or wet riser and fire service compatible couplings at every floor.
- Safe refuge area and communication system for those that require assistance, allowing rescue by emergency responders.
- A cheaper alternative for introducing a sprinkler system into every floor of the building.
- The EVACSTAC escape tower is accessible to all at every level, via a smoke extracting tunnel protected by 2 fire doors.
- Emergency lighting illuminates the interior, ensuring safe evacuation of all.



**“A simple solution to a rather complex situation.”**

***Tony How** (FRICS IRRV)*



**EVAC  
STAC**

For further information and for a full list of materials  
and applications please visit our website  
[www.evacstac.co.uk](http://www.evacstac.co.uk)

Any enquiries don't hesitate to contact us at  
[info@evacstac.co.uk](mailto:info@evacstac.co.uk) or **0333 210 5555**

## A product with the sole purpose of saving lives

---

EVACSTAC has been developed by a team specialising in retrofitting steel solutions to buildings to make them fit for purpose, with specialist advice from industry and fire experts.